



**Dr.
Schumacher**

DESCO CARE PRODUCTS

2023



SHAMPOO CAP / WASH CAP

Dr. Schumacher Shampoo Cap is designed for cleaning and hair care for the head area of inpatients, bedridden patients, and patients who require special care, such as intensive care patients. It removes dead cells from the hair with a special formulation while keeping the scalp healthy with Vitamin E and Provitamin B5. As in ordinary shampoo caps, it does not contain Latex, Lanolin, or Alcohol, so it is suitable for common use and allows for comfortable and safe care operations. Hair cleaning can be completed in a short time, such as 3 minutes, while effectively removing the remains like EEG gel, blood, and iodine from the scalp.

| SPECIFICATIONS | DESCRIPTION | |
|----------------------|--|----------------------------|
| NON-WOVEN: | 120 GSM WHITE SPUNLACE | |
| OUTER NONWOVEN: | PE Film 35GSM WHITE-WATERPROOF | |
| SEWING: | Over-locked: 5 stitches per cm with T120 Natural Polyester | |
| ELASTIC: | PULAST Transparent Elastic, latex free, 300 mic. X 6mm | |
| PACKING: | Doypack Pack, 60 PE + 12 PET | |
| FINISHED DIMENSIONS: | Component size: 50-53 cm diameter cut size | |
| | Finished article: | Aperture: 13-16cm diameter |
| | | Diameter: 26-28cm diameter |

| PACKING DETAILS | PACK/BOX/PALLET AMOUNT | WEIGHT | DIMENSIONS |
|-----------------|---------------------------|-----------------------------|----------------------|
| PACK | 1 SHAMPOO CAP IN A PACK | 166 GR | 50CM DIAMETER |
| BOX | 75 PACKS IN A BOX | 13,5 KGS | 39CM x 39CM x 30CM |
| PALLET | 36 BOXES IN A PALLET | 498 KGS | 80CM x 120CM x 195CM |
| DELIVERY TIME | 20 FT CONTAINER / 14 DAYS | 31.500 PACKS IN A CONTAINER | |

WASH GLOVES WITH BARRIER CREAM

Dr. Schumacher Wash Gloves with Barrier Cream provides comfortable and safe care opportunities for bedridden and intensive care patients. Thanks to a special formulation containing 3% Dimethicone, the gloves clean the skin, soften it and create a barrier layer. The content of Vitamin E and Provitamin B5 nourishes the skin and specially formulated phospholipids helps to recover the damaged cells, which lose water. The product is made from soft tissue with three-dimensional special fabric that prevents skin from irritation and easy to use with the structure of the pouch form. With their pleasant smell, the wash gloves make the patient feel better after cleaning.



| SPECIFICATIONS | DESCRIPTION |
|----------------------|--|
| NON-WOVEN: | 85 GSM WHITE HONEYCOMB SPUNLACE |
| PACKING: | Ziplock Pack, 60 PE + 12 PET or Flowpack, 60 PE + 12 PET |
| SEWING: | Ultrasonic |
| FINISHED DIMENSIONS: | 16cm x 23cm(Oval Shape), 15cmx22cm(Rectangular Shape) |

*Optional over-locked sewing and folding methods are available.

| PACKING DETAILS | PACK/BOX/PALLET AMOUNT | |
|-----------------|---------------------------|---------------------------|
| PACK | 8 WASHGLOVES IN A PACK | 10 WASHGLOVES IN A PACK |
| BOX | 60 PACKS IN A BOX | 55 PACKS IN A BOX |
| PALLET | 36 BOXES IN A PALLET | 36 BOXES IN A PALLET |
| DELIVERY TIME | 20 FT CONTAINER / 14 DAYS | 20 FT CONTAINER / 14 DAYS |



SHAMPOO & CONDITIONER CAP

Dr. Schumacher Shampoo&Conditioner Cap is intended for cleaning the hair, head area, and scalp of bedridden and intensive care patients. With a maximum use of 3 minutes on the head, it ensures that maintenance and cleaning are completed in a short time. To use, first remove the cap from the pack, then place the cap on the head, making sure that all the hair is inside the cap, and begin massaging the hair from top to bottom for 3 minutes before removing the cap. No rinse is required after using Shampoo Cap. It can be heated through microwave for 30 seconds at 700 W. The product contains many beneficial ingredients such as Vitamin E, Provitamin B5, Dimethicone, Allantoin, Glycerin, Chamomile Extract, Aloe Vera...

| SPECIFICATIONS | DESCRIPTION | |
|---------------------|--|----------------------------|
| NONWOVEN | 120 GSM WHITE SPUNLACE | |
| OUTER NONWOVEN | PE Film 35GSM WHITE-WATERPROOF | |
| SEWING | Over-locked: 5 stitches per cm with T120 Natural Polyester | |
| ELASTIC | PULAST Transparent Elastic, latex free, 300 mic. X 6mm | |
| PACKING | Doypack Pack, 60 PE + 12 PET | |
| FINISHED DIMENSIONS | Component size: 50-53 cm diameter cut size | |
| | Finished article: | Aperture: 13-16cm diameter |
| | | Diameter: 26-28cm diameter |

| PACKING DETAILS | PACK/BOX/PALLET AMOUNT | WEIGHT | DIMENSIONS |
|-----------------|-------------------------|-----------|----------------------|
| PACK | 1 SHAMPOO CAP IN A PACK | 0,160 KGS | 50CM DIAMETER |
| BOX | 75 PACKS IN A BOX | 13 KGS | 39CM x 39CM x 30CM |
| PALLET | 36 BOXES IN A PALLET | 483 KGS | 80CM x 120CM x 195CM |

EXTRA THICK WASH GLOVES

WEARABLE GLOVE FORM - Just put your hand inside the glove and clean your body easily.

NO WATER, NO RINSE - Wash Gloves are designed for the waterless cleaning of the body and are very easy and fast to use without rinsing. They reduce contamination and are also heatable in the microwave if needed.

DERMATOLOGICALLY TESTED - Dr. Schumacher Wash Gloves are dermatologically tested. It has a pH balance, is hypoallergenic, and is free of latex, lanolin, and alcohol.

RASH PREVENTER - It contains dimethicone which creates a barrier layer on the skin. This layer protects the skin from rash creation.



| SPECIFICATIONS | DESCRIPTION |
|----------------------|-----------------------------------|
| NONWOVEN: | 85 GSM WHITE HONEYCOMB SPUNLACE |
| SEWING: | Ultrasonic |
| PACKING: | Pack, 60 PE + 12 PET |
| FINISHED DIMENSIONS: | 14,5cm x 22cm (Rectangular Shape) |

| PACKING DETAILS | PACK/BOX/PALLET AMOUNT | WEIGHT | DIMENSIONS |
|-----------------|---------------------------|----------|----------------------|
| PACK | 8 WASHGLOVES IN A PACK | 0,24 KGS | |
| BOX | 55 PACKS IN A BOX | 14 KGS | 39CM x 39CM x 30CM |
| PALLET | 36 BOXES IN A PALLET | 520 KGS | 80CM x 120CM x 195CM |
| DELIVERY TIME | 20 FT CONTAINER / 14 DAYS | | |



EXTRA LARGE BATHING WIPES

Extra Large Bathing Wipes are designed for cleansing the body in situations where it cannot be showered normally. They are ready to use and contain agents for cleaning, moisturizing, nourishing, and protecting. It cleans as well as soap and similar products and provides much better care than these products. It is not as simple as regular cleaning agents. Its pH of 5.5 makes it suitable for daily use. Because of its high content, it promotes healthier skin. When used in the perineal region, it also prevents rash formation.

| SPECIFICATIONS | DESCRIPTION |
|----------------------|--------------------------|
| NONWOVEN: | 60 GSM WHITE SPUNLACE |
| FOLDING: | Z FOLD |
| PACKING: | FlowPack, 60 PE + 12 PET |
| FINISHED DIMENSIONS: | 30cm x 20cm |

| PACKING DETAILS | PACK/BOX/PALLET AMOUNT | WEIGHT | DIMENSIONS |
|-----------------|--------------------------|-----------|----------------------|
| PACK | 12 PIECES/ PACK | 0,200 KGS | |
| BOX | 100 PACKS/ BOX | 21 KGS | 39CM x 39CM x 30CM |
| PALLET | 36 BOXES/ PALLET | 771 KGS | 80CM x 120CM x 195CM |
| DELIVERY TIME | 20 FT CONTAINER/ 14 DAYS | | |



*Rinse-Free Ready-to-Use Bath Sponges:
The Solution for On-the-Go Hygiene and
Patient Care!*

Whether you are out for camping, hiking or in a hospital setting, these sponges are your go-to solution for quick and effective skin care. Perfect for patients who are post-surgery, bedridden, or in intensive care, they provide a convenient way to clean and refresh the skin. So whether you're on the go, or need a solution for patient care these sponges offer an alternative to traditional bathing methods, eliminating the need for water.

The fibrous sponge structure works to both cleanse and purify the skin, removing dead skin cells as you scrub. Infused with nourishing and moisturizing ingredients like Vitamin E, Provitamin B5, Chamomile Extract, Dimethicone, Allantoin, and Aloe Vera, these sponges offer a complete cleansing and skin care experience in one. Simply lather the sponge, scrub your body, and if you prefer dry with a towel for a refreshed, revitalized feel.



We are also offering altered formulation **Antibacterial Rinse-Free** Ready-to-Use Bath Sponge. It is an essential product for those seeking ultimate protection, especially patients in intensive care. With **2% Chlorhexidine (CHG)**, a highly effective antiseptic, it provides superior defense against a wide range of microorganisms including bacteria, fungi, and viruses. Not only does it effectively target both gram-negative and gram-positive bacteria, but it also nourishes and hydrates the skin instead of drying it out like alcohol-based antiseptic cleansing products. Get ready for a clean and healthy bathing experience with this convenient solution to stay protected from environmental germs.

| SPECIFICATIONS | DESCRIPTION |
|----------------------|--------------------------|
| FABRIC: | FIBER |
| FOLDING: | V FOLD |
| PACKING: | FlowPack, 60 PE + 12 PET |
| FINISHED DIMENSIONS: | 20cm x 20cm |

| PACKING DETAILS | PACK/BOX/PALLET AMOUNT | WEIGHT | DIMENSIONS |
|-----------------|------------------------|-----------|----------------------|
| PACK | 8 PIECES/ PACK | 0,250 KGS | |
| BOX | 24 PACKS/ BOX | 7 KGS | 39CM x 39CM x 30CM |
| PALLET | 36 BOXES/ PALLET | 272 KGS | 80CM x 120CM x 195CM |

BARRIER CREAM PERINEAL WIPE

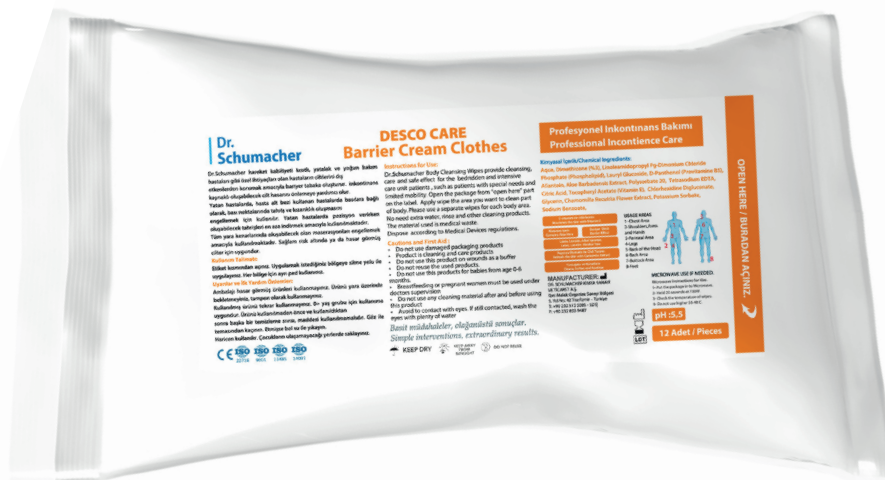
Especially for patients who use diapers, this product is recommended after a diaper change. As a result of cleaning the perineal area with highly basic products such as soap and water, the acid layer in the region (protective barrier layer) can be deformed. The skin that deforms the acid layer dries out. Dry skin causes cracks and fissures, creating an ideal environment for the development of urinary infection ruins in the area. **Dr. Schumacher** Perineal Wipe takes up the role of a degraded natural barrier layer with 3% Dimethicone in the content. This layer provides breathability and blocks the transmission of liquid. The product is specially designed for the perineal region and will not cause any damage around the area with its soft tissue texture. With the clearance in the area of stools and urine and with supporting elements, skin damage is seen to return to its natural structure. With special ingredients like Chamomile Extract and Vitamin E in addition to Phospholipids to moisturize dry skin, it offers comfortable cleaning and maintenance facilities for skin that has lost its elasticity.



| SPECIFICATIONS | DESCRIPTION | | |
|----------------------|---------------------------------|-----------|----------------------|
| NONWOVEN: | 50 GSM WHITE HONEYCOMB SPUNLACE | | |
| FOLDING: | Z FOLD | | |
| PACKING: | FlowPack, 60 PE + 12 PET | | |
| FINISHED DIMENSIONS: | 20cm x 20cm | | |
| PACKING DETAILS | PACK/BOX/PALLET AMOUNT | WEIGHT | DIMENSIONS |
| PACK | 25 PIECES / PACK | 0,225 KGS | |
| BOX | 60 PACKS / BOX | 14,5 KGS | 39CM x 39CM x 30CM |
| PALLET | 36 BOXES / PALLET | 537 KGS | 80CM x 120CM x 195CM |
| DELIVERY TIME | 20 FT CONTAINER / 14 DAYS | | |

BARRIER CREAM CLOTHES

Dr. Schumacher Barrier Cream Clothes create a barrier layer on the skin with its special formulation while also meeting the daily cleaning needs. Clinical trials prove that moist skin protects the integrity of the skin better. Because there is a capability of elasticity. Regular products eliminate elasticity capabilities, which cause the drying of the skin, creating cracks then lead to disintegration. **Dr. Schumacher** Barrier Cream Clothes with 3% Dimethicone in product content help protect the skin from external factors by creating a barrier layer. Aloe Vera, Vitamins E, Chamomile Extract and Pro Vitamin B5 allows the skin to be healthier. With Phospholipids in the content, it also helps in the recovery of water lost from the skin.



| SPECIFICATIONS | DESCRIPTION | | |
|----------------------|-------------------------------|-----------|----------------------|
| NONWOVEN: | 60 GSM WHITE SPUNLACE | | |
| FOLDING: | Z FOLD | | |
| PACKING: | FlowPack, 60 PE + 12 PET | | |
| FINISHED DIMENSIONS: | 22cm x 22cm | | |
| PACKING DETAILS | PACK/BOX/PALLET AMOUNT | WEIGHT | DIMENSIONS |
| PACK | 12 PIECES / PACK | 0,165 KGS | |
| BOX | 100 PACKS / BOX | 17,50 KGS | 39CM x 39CM x 30CM |
| PALLET | 36 BOXES / PALLET | 645 KGS | 80CM x 120CM x 195CM |
| DELIVERY TIME | 20 FT CONTAINER / (12 PALLET) | | |

ZINC OXIDE BARRIER CREAM

Dr. Schumacher Barrier Cream is used to protect hospitalized patients and patients wearing adult diapers from irritations and redness that may occur at pressure points. It keeps dermatitis from forming on the skin as a result of incontinence. In hospitalized patients, *Dr. Schumacher* Barrier Cream helps prevent irritations caused by positioning. It prevents maceration at the wound's edge, as well as wound growth, and contributes to wound healing. It has a powerful skin-moisturizing formula and a concentrated cream form that is resistant to water. While *Dr. Schumacher* Barrier Cream does not prevent plaster adhesion to the skin, it does make it easier to remove.

Dr.
Schumacher



| PACKING DETAILS | PACK/BOX/PALLET AMOUNT | WEIGHT | DIMENSIONS |
|-----------------|------------------------|----------|----------------------|
| PACK | 100GR / PACK | 0,13 KGS | 4,5CM x 4,5CM x 15CM |
| OUTER BOX | 118 PIECES / BOX | 16,5 KGS | 39CM x 39CM x 30CM |
| PALLET | 36 BOXES / PALLET | 610 KGS | 80CM x 120CM x 195CM |

TRANSPARENT BARRIER CREAM

Dr. Schumacher Transparent Barrier Cream offers a smooth, viscous, greaseless, and fragrance-free moisture barrier. It creates a mechanical skin interface and offers the skin a unique, long-lasting protection, such as against maceration. It also resists wash off and therefore does not need frequent reapplication. It can be used to protect the skin from major factors like:

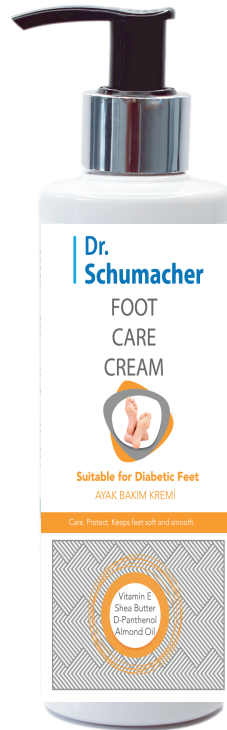
- Wound exudates
- Urinary and faecal incontinence (chronic or acute)
- Digestive fluids
- Friction and shearing forces

Contains:

Cera Alba forms flexible protective layers on skin and enhances adhesion of formulations. **Shea Butter** has been designed to keep your skin feeling soft, smooth and hydrated. **Vitamin E Acetate** protects the cells against free radicals and prevents the peroxidation of body fats. **Panthenol** has many beneficial uses to improve skin appearance because of its humectant properties. It relieves oxidative stress symptoms such as redness, lines, and callouses. **Polymol Ipp** is a non-oily ester, emollient and has good spreadability, providing a silky touch to products for skin, hair, and bath. **Cocoa Butter** softens and smoothes the skin. **Glycerin**, a humectant, attracts water and thus provides moisturizing and healing properties to the skin. **Sweet Almond Oil** is rich in oleic and linoleic fatty acids and contains vitamins A, B1, B2 and B6 as well.



| PACKING DETAILS | PACK/BOX/PALLET AMOUNT | WEIGHT | DIMENSIONS |
|-----------------|------------------------|----------|----------------------|
| PACK | 120GR / PACK | 0,15 KGS | 4,5CM x 4,5CM x 17CM |
| OUTER BOX | 100 PIECES / BOX | 15,8 KGS | 39CM x 39CM x 30CM |
| PALLET | 36 BOXES / PALLET | 584 KGS | 80CM x 120CM x 195CM |



FOOT CARE CREAM 'FOR DIABETIC FOOT'

Dr. Schumacher Foot Care Cream is prepared for foot care and protection. It effectively protects and moisturizes dry, cracked heels and hard feet. With an effective combination of vegetable oils and vitamins, it softens the skin of the feet and helps prevent cracks. Dry feet, known as xerosis in patients with Type 1 and Type 2 diabetes, lead to autonomic neuropathy, impaired sweat production, peripheral erythema, edema, atrophy, and even aggravation of dry skin in the future. Dry skin, if left untreated, may develop fissures with a risk of ulceration. Also, when the foot is subjected to increased pressure and friction, the risk of developing a foot ulcer increases. Ulcers must be avoided because they not only cause significant discomfort and problems for the patient, but they can also result in amputation as the most serious consequence. When calluses and fissures increase, ulceration occurs. Regular use of a moisturizing cream formulated according to the needs of the diabetic foot can prevent this situation. For this reason, *Dr. Schumacher* Foot Care Cream is an important supportive product for diabetic foot care.

| PACKING DETAILS | PACK/BOX/PALLET AMOUNT | WEIGHT | DIMENSIONS |
|-----------------|------------------------|----------|---------------------|
| PACK | 200ML/ BOTTLE | 0,23 KGS | |
| OUTER BOX | 100 BOTTLES/ BOX | 24 KGS | 39CM x 39CM x 30CM |
| PALLET | 36 BOXES/ PALLET | 879 KGS | 80CM x 20CM x 195CM |

LEMON GLYCERIN SWAB STICKS

Dr. Schumacher Lemon Glycerin Swab Sticks help with the salivation of bed-dependent and intensive care patients with salivation problems. It provides mouth care, and helps prevent infection.

- Easy to use with the 15cm stick size and 3 cm cotton tip.
- Ready to use and do not require any additional operation.
- With its rich content, it helps in the treatment of contamination by cleaning of the mouth's surface.



| SPECIFICATIONS | DESCRIPTION | | |
|-----------------|---------------------------------------|-----------|----------------------|
| MATERIAL: | PP STICK 100% COTTON SWAB | | |
| SWAB LENGHT: | 15CM | | |
| PACKING: | Aluminium Laminated Pack, 60 PE+12PET | | |
| QUANTITY: | 3 STICKS / PACK | | |
| PACKING DETAILS | PACK /BOX / PALLET AMOUNT | WEIGHT | DIMENSIONS |
| PACK | 3 SWAB STICKS /PACK | 0,012 KGS | |
| OUTER BOX | 12 STANDS / BOX | 5,7 KGS | 37CM x 56CM x 20CM |
| PALLET | 48 BOXES / PALLET | 295 KGS | 114CM x 114CM x 15CM |



ANTI-BACTERIAL SHAMPOO CAP

Dr. Schumacher Antibacterial Shampoo Cap is designed to clean the hair and head area of patients with special needs, such as bedridden patients, patients with limited mobility, and intensive care patients. It is ready to use and does not require rinsing and drying. With its antibacterial effect thanks to **2% Chlorhexidine (CHG)** it eliminates the risk of infection caused by environmental bacteria. It provides a highly gentle experience with the special fabrics used. The ingredients in it remove dead cells from the inside of your head and allow the skin to breathe. With special Latex-Free rubber, it does not irritate the skin and instead nourishes the hair and scalp with Provitamin B5 and Vitamin E. It takes only five minutes to care for the hair and the head.

| SPECIFICATIONS | DESCRIPTION |
|----------------------|--|
| NONWOVEN: | 120 GSM WHITE SPUNLACE |
| OUTER NONWOVEN: | PE Film 35GSM WHITE-WATERPROOF |
| SEWING: | Over-locked: 5 stitches per cm with T120 Natural Polyester |
| ELASTIC: | PULAST Transparent Elastic, latex free, 300 mic. X 6mm |
| PACKING: | Doypack Pack, 60 PE + 12 PET |
| FINISHED DIMENSIONS: | Component size: 50-53 cm diameter cut size |
| | Finished article: |
| | Aperture: 13-16cm diameter Diameter: 26-28cm diameter |

| PACKING DETAILS | PACK/BOX/PALLET AMOUNT | WEIGHT | DIMENSIONS |
|-----------------|---------------------------|--------------------------------|----------------------|
| PACK | 1 SHAMPOO CAP IN A PACK | 0,166 KGS | 50CM DIAMETER |
| BOX | 75 PACKS IN A BOX | 13,45 KGS | 39CM x 39CM x 30CM |
| PALLET | 36 BOXES IN A PALLET | 500 KGS | 80CM x 120CM x 195CM |
| DELIVERY TIME | 20 FT CONTAINER / 14 DAYS | 420 BOXES IN A 20 FT CONTAINER | |

ANTI-BACTERIAL WASH GLOVES

Dr. Schumacher Antibacterial Wash Gloves provide very effective and easy maintenance due to the structure of the pouch form. With its honeycomb texture, even the greatest remains are easily separated from the body, and with **2% Chlorhexidine (CHG)** it ensures the antibacterial properties of the area. With its 85 GSM soft cloth structure, it is more useful and effective than conventional wipes, and it also provides body cleaning in a much shorter time than conventional washing methods. The care and cleaning requirements of patients can be met with one complete package of Wash Gloves. It adds elasticity to the skin and contributes to making the skin healthier. Thus, please do not dry the skin as you would with a water and soap.



| SPECIFICATIONS | DESCRIPTION | | |
|----------------------|--|----------|----------------------|
| NONWOVEN: | 85 GSM WHITE HONEYCOMB SPUNLACE | | |
| SEWING: | ULTRASONIC | | |
| PACKING: | Ziplock Pack, 60 PE + 12 PET | | |
| FINISHED DIMENSIONS: | 16cm x 23cm (Oval Shape) | | |
| PACKING DETAILS | PACK/BOX/PALLET AMOUNT | WEIGHT | DIMENSIONS |
| PACK | 10 WASHGLOVES IN A PACK | 0,24 KGS | |
| BOX | 55 PACKS IN A BOX | 12,5 KGS | 39CM x 39CM x 30CM |
| PALLET | 36 BOXES IN A PALLET | 470 KGS | 80CM x 120CM x 195CM |
| DELIVERY TIME | 12 PALLET IN A 20 FT CONTAINER / 14 DAYS | | |



ANTI-BACTERIAL BODY CLEANING WIPE

With the special formulation which contains highly effective active ingredient **2% Chlorhexidine (CHG)**, *Dr. Schumacher* Antibacterial Body Cleansing Wipes are 99.99% effective on gram-negative and gram-positive bacteria. It can be used for daily body cleaning in patients who are bedridden, in intensive care, have limited mobility, or patients who are in the pre- and post-operative phases to protect their bodies from environmental infections. In addition to its rich content and cleansing effect, it also offers professional skin care. It is suitable for frequent use with its soft cloth texture and skin-friendly pH grade. Unlike the other antibacterial cleansing products, it does not dry out the skin; on the contrary, it gives the skin nutrition and handiness.

| SPECIFICATIONS | DESCRIPTION |
|----------------------|--------------------------|
| NONWOVEN: | 60 GSM WHITE SPUNLACE |
| FOLDING: | Z FOLD |
| PACKING: | FlowPack, 60 PE + 12 PET |
| FINISHED DIMENSIONS: | 22cm x 22cm |

| PACKING DETAILS | PACK/BOX/PALLET AMOUNT | WEIGHT | DIMENSIONS |
|-----------------|--|-----------|----------------------|
| PACK | 12 PIECES / PACK | 0,165 KGS | |
| BOX | 100 PACKS / BOX | 17,50 KGS | 39CM x 39CM x 30CM |
| PALLET | 36 BOXES / PALLET | 645 KGS | 80CM x 120CM x 195CM |
| DELIVERY TIME | 12 PALLET IN A 20 FT CONTAINER / 14 DAYS | | |

ANTI-BACTERIAL PERINEAL WIPE

Dr. Schumacher Perineal Area Cleansing Wipes are designed to be used by patients with incontinence problems and those who use adult diapers. In such individuals, bacteria such as the e-coli in the urine and stool may cause serious skin damage as well as urinary tract infections. With 2% Chlorhexidine (CHG) in the composition, it destroys 99.99% of such harmful bacteria without causing any damage to the mucous area and the skin. With the honeycombed texture, it can easily clean the gaita in the perineal area, while the soft texture offers comfortable handling on sensitive skin. It helps to repair the dried and cracked area, regulates the pH balance of the skin, and helps to regain skin health. These wipes should be used after each diaper change for patients who use adult diapers.



Ref: MAB0040-1

Barcode: 8683148050254

Class: Biocidal

| SPECIFICATIONS | DESCRIPTION |
|-----------------------------|---------------------------------|
| NONWOVEN: | 50 GSM WHITE HONEYCOMB SPUNLACE |
| FOLDING: | Z FOLD |
| PACKING: | FlowPack, 60 PE + 12 PET |
| FINISHED DIMENSIONS: | 22cm x 22cm |

| PACKING DETAILS | PACK/BOX/PALLET AMOUNT | WEIGHT | DIMENSIONS |
|----------------------|---------------------------------------|-----------|----------------------|
| PACK | 50 PIECES / PACK | 0,555 KGS | |
| BOX | 35 PACKS / BOX | 20,50 KGS | 39CM x 39CM x 30CM |
| PALLET | 36 BOXES / PALLET | 753 KGS | 80CM x 120CM x 195CM |
| DELIVERY TIME | 20 FT CONTAINER / 12 PALLET / 14 DAYS | | |



STING-FREE BARRIER FILM SPRAY

Dr. Schumacher Barrier Film is 100% silicone based. It forms a long-lasting transparent barrier layer which can dry in a maximum of 30-45 seconds. This transparent barrier layer is long lasting, breathable, durable and provides full protection against potential damage. The plaster, ostomy adapter, which will be used after the product is applied, does not prevent wound care products from adhering. It is neither toxic nor irritating.

Ingredients:

Polydimethylsiloxane,
Cyclopentasiloxane,
Trimethylsiloxysilicate,
Phenyl Trimethicone.

30 ml

| PACKING DETAILS | PACK/BOX/PALLET AMOUNT | WEIGHT | DIMENSIONS |
|-----------------|------------------------|-----------|------------------------|
| PACK | 30 ml/ BOTTLE | 0,042 KGS | 3,5CM x 3,5CM x 9,3CM |
| BOX | 152 BOTTLE/ BOX | 7,4 KGS | 29,5CM x 29,5CM x 23CM |
| PALLET | 48 BOXES/ PALLET | 370 KGS | 80CM x 120CM x 195CM |

50 ml

| PACKING DETAILS | PACK/BOX/PALLET AMOUNT | WEIGHT | DIMENSIONS |
|-----------------|------------------------|-----------|------------------------|
| PACK | 50 ml/ BOTTLE | 0,069 KGS | 3,5CM x 3,5CM x 12CM |
| BOX | 98 BOTTLE/ BOX | 7,8 KGS | 29,5CM x 29,5CM x 23CM |
| PALLET | 48 BOXES/ PALLET | 390 KGS | 80CM x 120CM x 195CM |



DESCO CARE PRODUCTS





Dr.
Schumacher